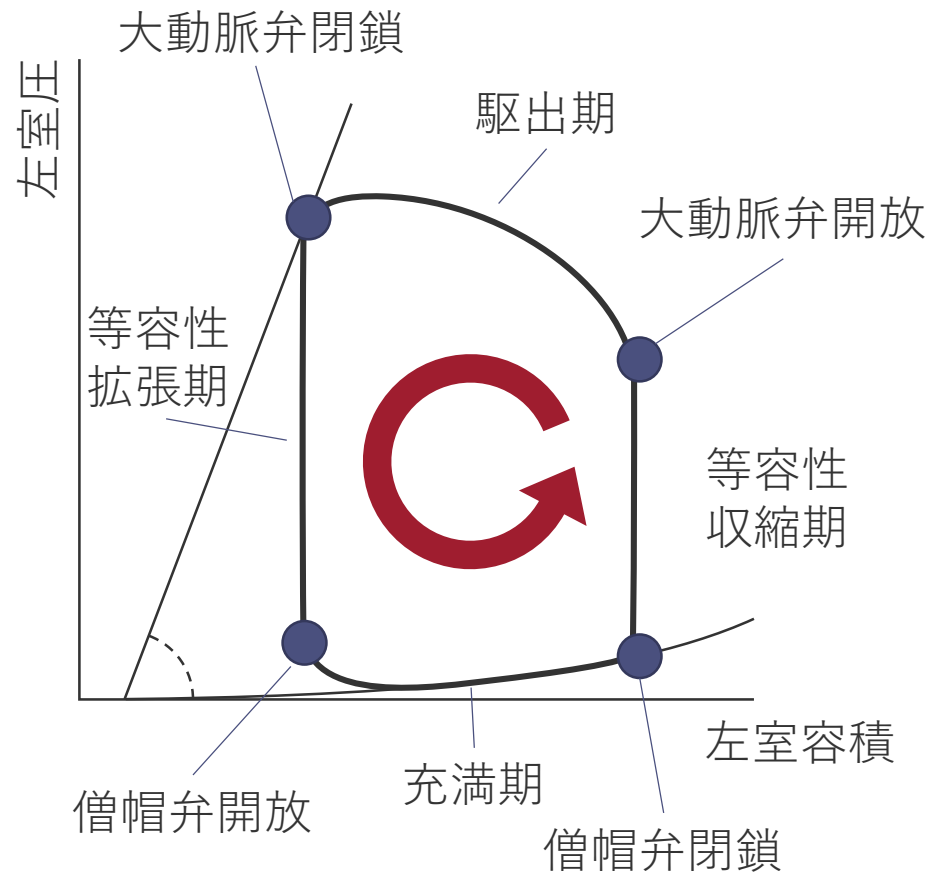
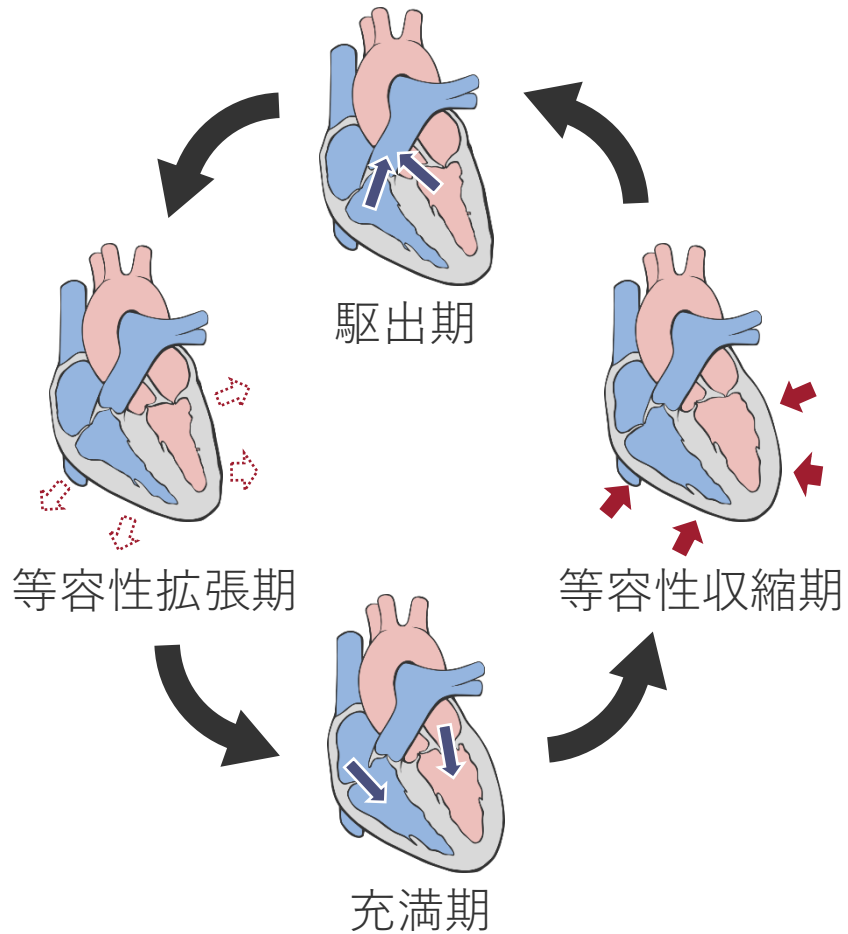
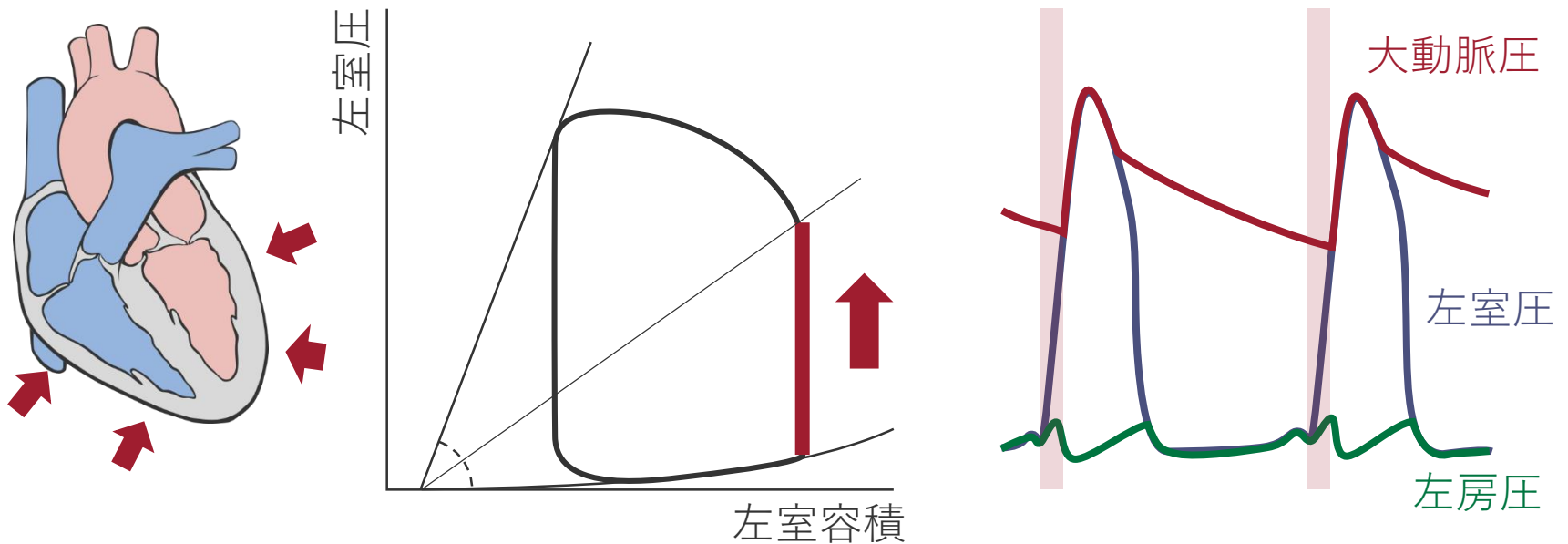


Cardiac cycleとは？

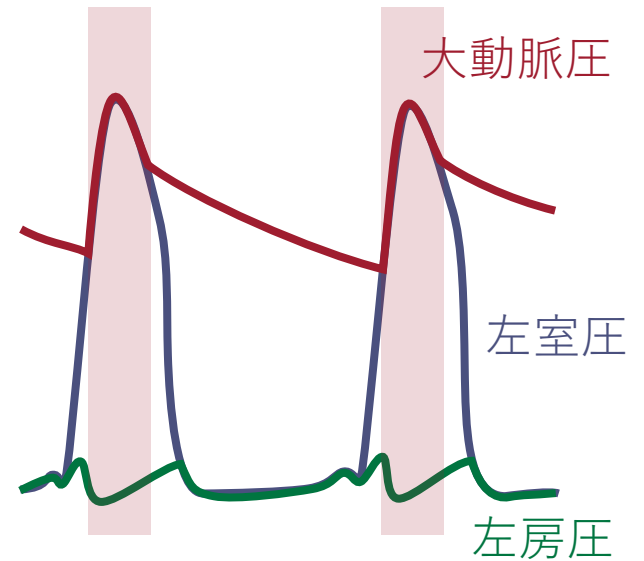
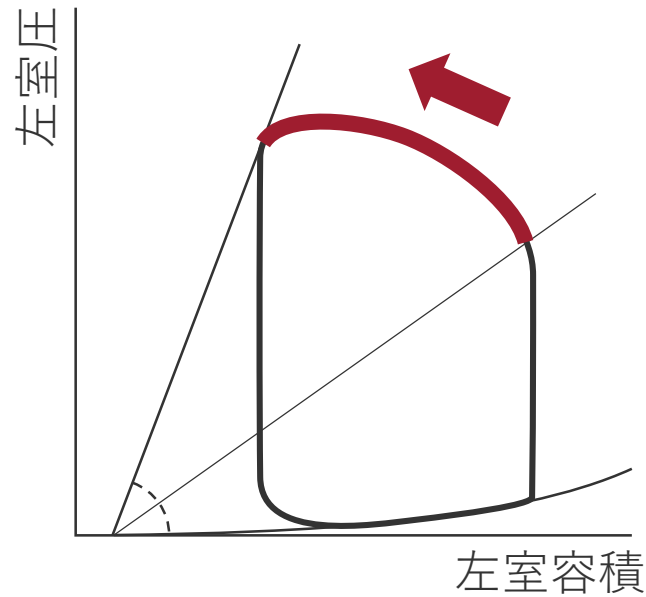
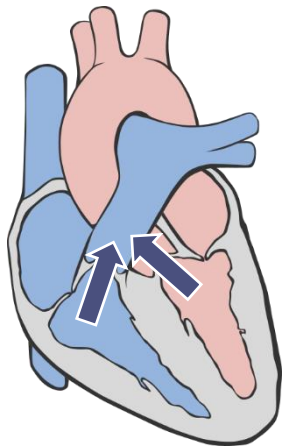


等容性収縮期



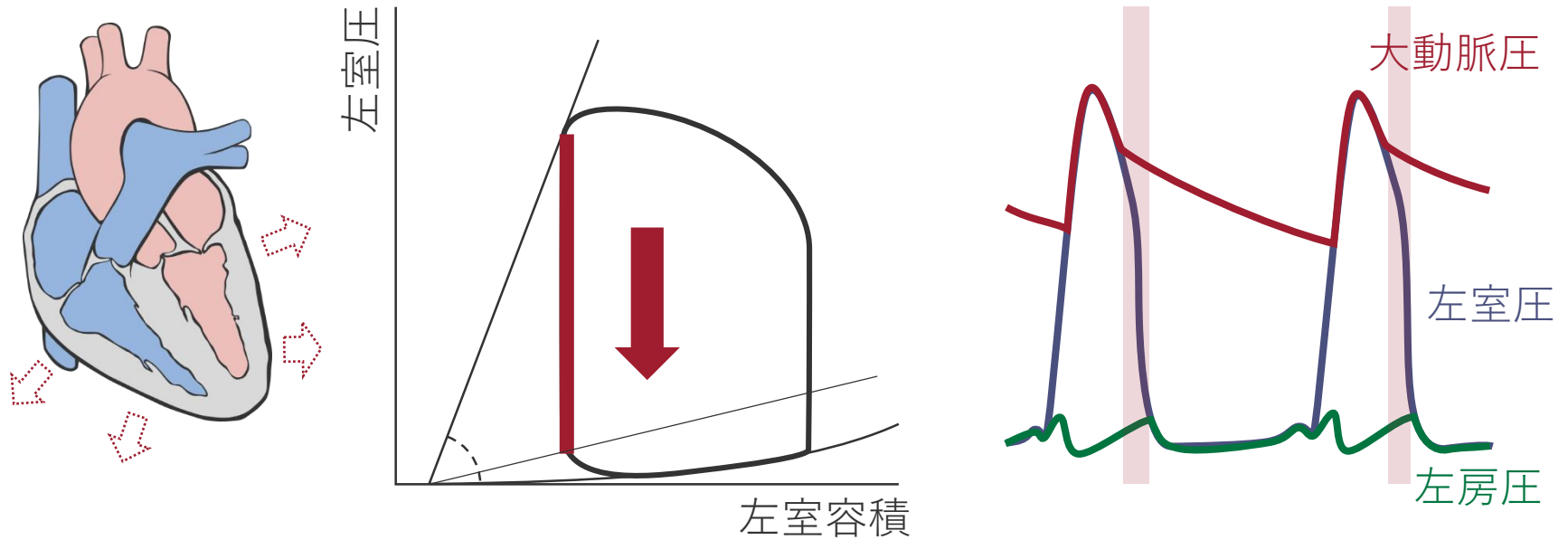
収縮が始まり、左室圧があがるも大動脈圧以下

駆出期



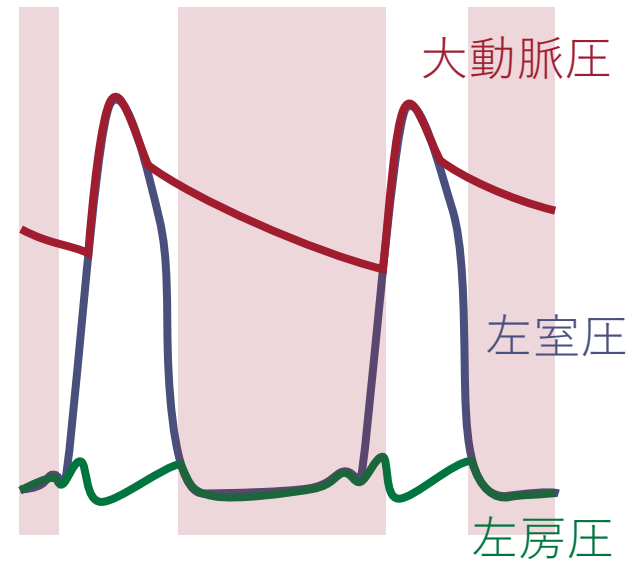
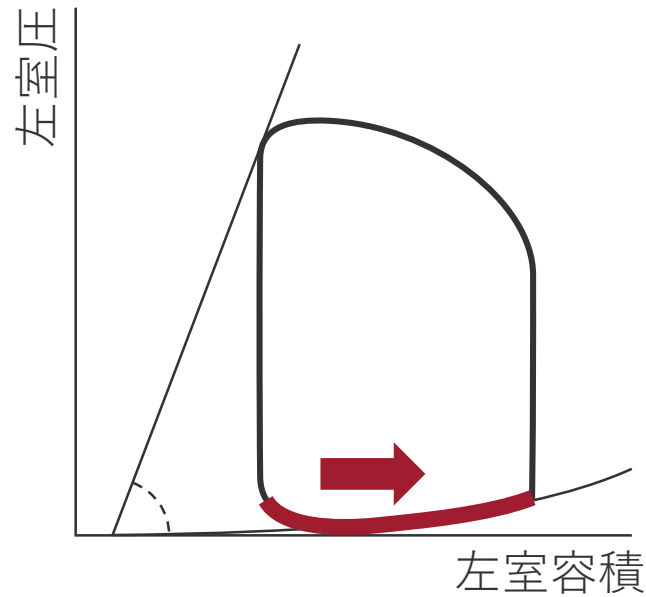
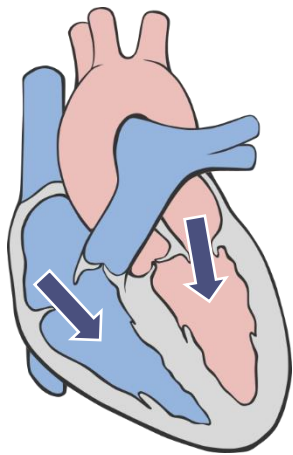
左室圧が大動脈圧以上となり、血液を大動脈に駆出

等容性拡張期



弛緩が始まり、左室圧が急激に低下

充満期



左室圧が下がり、左房から左室に血液が流入する